

# GRAND SPECTACLE!

ENTERTAINMENT IN BELLE ÉPOQUE PARIS

# GRAND SPECTACLE! ENTERTAINMENT IN BELLE ÉPOQUE PARIS



ALEXANDER ARCHIPENKO (1887 – 1964)  
*Title unknown (Movement)*, c. 1913  
signed lower centre *Archipenko*  
with inscription verso *S.G. Falk, Geneve*  
collage, pastel and pencil on brown paper  
54.5 x 35.5 cm. (21 ½ x 14 in.)



PABLO PICASSO (1881 – 1973)  
*Jane Avril*, 1901  
signed with monogram lower right *RUIZ*, and  
later signed again lower right *Picasso / 1901*  
brush and pen and india ink on paper  
49.8 x 32.4 cm. (19 ¾ x 12 ¾ in.)



ALEXANDER ARCHIPENKO (1887 – 1964)  
*Title unknown (Dancing)*, c. 1914  
signed lower right *Archipenko*  
crayon, chalk and pencil on halftone paper  
41 x 32 cm. (16 ¼ x 12 ½ in.)



PABLO PICASSO (1881 – 1973)  
*Femme au châle rouge (Suzanne Bloch)*, Dec. 1904  
inscribed and signed lower right *A Suzanne Bloch / Picasso*; dated upper right *Décembre 04*  
pen and ink with watercolour on paper  
17.1 x 11.1 cm. (6 ¾ x 4 ⅜ in.)



LOUIS-ALBERT BESNARD (1873 – 1962)  
*Sarah Bernhardt in the role of Lorenzaccio*, c. 1896  
signed lower centre at right *Louis A Besnard*  
pencil, watercolour, brown wash and gouache  
on paper  
10.9 x 20.5 cm. (4 ¼ x 8 ⅝ in.)



PABLO PICASSO (1881 – 1973)  
*Femme au miroir, étude*, Spring 1905  
pen and ink and ink wash on greenish-beige paper  
16.4 x 9.6 cm. (6 ½ x 3 ¾ in.)



GIOVANNI BOLDINI (1842 – 1931)  
*A man playing a piano in the Artist's studio*  
signed in black chalk, lower centre *Boldini*  
pencil on paper  
36.3 x 26.8 cm. (14 ¼ x 10 ½ in.)



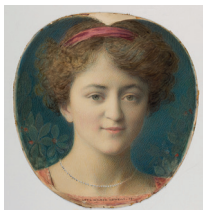
PABLO PICASSO (1881 – 1973)  
*Jeune acrobate et singe*, 1905  
inscribed upper left and right *Catalogue / Invitation*; and inscribed lower left *Acuarellas / Monsieur - Max Jacob -*  
pen and ink with watercolour on paper  
21 x 12.5 cm. (8 ¼ x 4 15/16 in.)



EDGAR DEGAS (1834 – 1917)  
*Mlle Bécot aux Ambassadeurs (Café-Concert)*, c. 1877-79  
signed lower left *Degas*  
pastel over lithograph transferred from  
monotype  
16.2 x 12.2 cm. (6 ⅜ x 4 ¾ in.)



PABLO PICASSO (1881 – 1973)  
*Étude pour 'Arlequin à cheval'*, 1905  
signed in ink upper right *Picasso*  
watercolour, pen and black ink on paper  
22.1 x 12.6 cm. (8 11/16 x 4 15/16 in.)



LOUIS WELDEN HAWKINS (1849 – 1910)  
*Portrait of the actress Jeanne Silvain*, 1909  
signed and dated lower centre *LOUIS. WELDEN. HAWKINS - 09-*  
pastel, coloured chalks, watercolour and touches  
of gouache, with a framing line in pencil.  
33.8 x 31.5 cm. (13 ¼ x 12 ⅜ in.)



PABLO PICASSO (1881 – 1973)  
*Tête d'arlequin*, conceived 1905, cast between  
1910 and 1939  
signed verso *Picasso*  
bronze with dark brown patina  
40.6 x 37 x 22.8 cm. (16 x 14 5/16 x 9 in.)  
cast by Valsuani, Rudier or Susse foundry



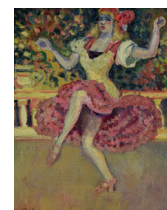
CHARLES MAURIN (1856 – 1914)  
*Portrait of Toulouse-Lautrec*, 1893  
numbered and signed lower right in blue pencil  
*no. 2 / Maurin*  
etching and aquatint printed in dark brown ink  
on wove paper  
plate: 22.5 x 13.7 cm. (8 7/8 x 5 3/8 in.)



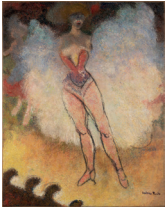
LUDOVIC-RODO PISSARRO (1878 – 1952)  
*Danseuses de Cabaret*, c. 1906  
signed lower left *Ludovic Rodo*  
oil on panel  
46 x 55 cm. (18 ⅞ x 21 ⅞ in.)



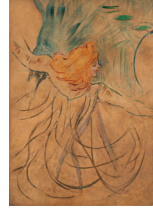
PABLO PICASSO (1881 – 1973)  
*La danseuse Sada Yacco (recto); Femme nue, assise (verso)*, 1900 or 1901  
signed lower left *Picasso*  
pastel and black ink on paper  
37.1 x 25.5 cm. (15 ¼ x 10 ⅞ in.)



LUDOVIC-RODO PISSARRO (1878 – 1952)  
*Danseuse au Tabarin*, c. 1904  
signed lower left *L. Rodo*  
oil on canvas  
41 x 33 cm. (16 ⅞ x 13 in.)



LUDOVIC-RODO PISSARRO (1878 – 1952)  
*Danseuse de cabaret chantant*, c. 1906  
 signed with estate stamp lower right *Ludovic Rodo*  
 oil on canvas  
 92 x 73 cm. (36 ¼ x 28 ¾ in.)



HENRI DE TOULOUSE-LAUTREC (1864 – 1901)  
*Au music-hall: La Loie Fuller*, c. 1892  
 thinned oil on paper laid down on board laid  
 down on panel  
 47 x 33 cm. (18 ½ x 13 in.)



LUDOVIC-RODO PISSARRO (1878 – 1952)  
*Danseuses de Cabaret sur scène*, c. 1906  
 signed lower left *Ludovic Rodo*  
 oil on canvas  
 51.8 x 38 cm (20 ⅝ x 15 in.)



HENRI DE TOULOUSE-LAUTREC (1864 – 1901)  
*Tristan Bernard au Velodrome Buffalo (Tristan  
 Bernard at the Buffalo cycle track)*, 1895  
 oil on canvas  
 65 x 81 cm. (25 ⅝ x 31 ⅞ in.)



LUDOVIC-RODO PISSARRO (1878 – 1952)  
*Danseuse de Cabaret, jambe levée*, c. 1906  
 signed with estate stamp lower left *Ludovic Rodo*  
 oil on panel  
 90.5 x 73 cm. (35 ⅞ x 28 ¾ in.)



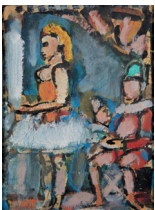
PAUL TROUBETKZOY (1866 – 1938)  
*Danseuse (Countess Tamara de Svirsky)*, 1910  
 signed, dated and stamped 1910 *Paul Troubetzkoy*  
 and *C. Valsuani Cire Perdue*.  
 bronze with a brown patina  
 height: 52 cm. (21 in.)



LUDOVIC-RODO PISSARRO (1878 – 1952)  
*Acrobat*, c. 1907  
 signed with initials lower right *L.R*  
 oil on canvas  
 40 x 28 cm. (15 ¾ x 11 in.)



PAUL TROUBETKZOY (1866 – 1938)  
*La Argentina (Spanish Dancer)*, 1910-11  
 signed, dated and stamped in the wax *Paul  
 Troubetzkoy, 1911, C. Valsuani Cire Perdue*.  
 bronze with a dark brown patina with golden  
 undertones  
 height: 55 cm. (22 in.)



GEORGES ROUAULT (1871 – 1958)  
*La famille du clown*, 1929-39  
 with two atelier stamps verso  
 oil and gouache on paper laid down on canvas  
 53.7 x 39.3 cm. (21 ¼ x 15 ½ in.)



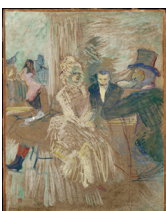
PAUL TROUBETKZOY (1866 – 1938)  
*Anna Pavlova seated*, 1915  
 signed, dated and inscribed in the wax 1915  
*ROMAN BRONZEWORKS N-Y*.  
 bronze with a dark brown patina  
 height: 32 cm. (12 in.)



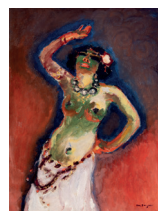
THÉOPHILE ALEXANDRE STEINLEN (1859 – 1923)  
*La Compagnie du Chat Noir*, 1896  
 colour lithograph on wove paper, printed by  
 Charles Verneau  
 62 x 40 cm. (24 ¾ x 17 ¾ in.)



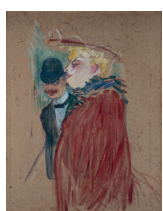
LOUIS ABEL-TRUCHET (1857 – 1918)  
*Au Cabaret – Paris*, 1897  
 signed and dated lower left *Abel Truchet 97*  
*Le Cabaret – Montmartre*, 1897  
 signed and dated lower right *Abel Truchet 97*  
 both: oil on canvas  
 both: 36.8 x 30.5 cm. (14 ½ x 12 in.)



HENRI DE TOULOUSE-LAUTREC (1864 – 1901)  
*Au Bal masqué de l'Elysée Montmartre*, 1887  
 stamped lower left with the red monogram *HTL*  
 oil on board  
 58 x 45.7 cm. (22 ¾ x 18 in.)



KEES VAN DONGEN (1877 – 1968)  
*Danseuse Bobémienne*, c. 1907  
 signed lower right *van Dongen*  
 oil on canvas  
 70 x 65 cm. (27 ½ x 25 ½ in.)



HENRI DE TOULOUSE-LAUTREC (1864 – 1901)  
*Au promenoir la convoitise (Lust on the  
 promenade)*, 1889  
 détrempe on paperboard  
 50 ¼ x 38 cm. (19 ¾ x 15 in.)



KEES VAN DONGEN (1877 – 1968)  
*Modjesko Soprano Singer*, 1907  
 signed and titled lower right *Van Dongen*;  
*Modjesko Soprano Singer*  
 oil on paper with gouache highlights laid down on  
 canvas  
 65 x 33.5 cm (25 ½ x 13 in.)

# GRAND SPECTACLE!

## ENTERTAINMENT IN BELLE ÉPOQUE PARIS



Paris's so-called 'beautiful era', lasting a brief 43 years, was a remarkably optimistic and fertile period. With the flourishing of its theatres, cabarets, salons, music halls and circuses, Belle Époque Paris had something to tempt denizens and visitors from every level of society. *La Ville Lumière* offered a seemingly endless source of inspiration and became a global centre for the arts and entertainment. This golden age of French culture was captured by the period's greatest artists, drawn to the vibrant and innovative atmosphere which gave rise to new and significant artistic styles. The artworks encompassed by this exhibition provide a glimpse into the fleeting and captivating spectacles of Belle Époque Paris.

WARD MORETTI

12 Duke Street, St James's, London, SW1Y 6BN, United Kingdom  
+44 (0) 203 370 7233 [www.wardmoretti.art](http://www.wardmoretti.art)

ALL RIGHTS RESERVED WARD MORETTI LTD. 2024